



# SENP2 Polyclonal Antibody

<b>Catalog No</b>	YP-Ab-02779
<b>Isotype</b>	IgG
<b>Reactivity</b>	Human;Mouse;Rat
<b>Applications</b>	WB;IHC;IF;ELISA
<b>Gene Name</b>	SENP2
<b>Protein Name</b>	Sentrin-specific protease 2
<b>Immunogen</b>	The antiserum was produced against synthesized peptide derived from human SENP2. AA range:481-530
<b>Specificity</b>	SENP2 Polyclonal Antibody detects endogenous levels of SENP2 protein.
<b>Formulation</b>	Liquid in PBS containing 50% glycerol, 0.5% BSA and 0.02% sodium azide.
<b>Source</b>	Polyclonal, Rabbit,IgG
<b>Purification</b>	The antibody was affinity-purified from rabbit antiserum by affinity-chromatography using epitope-specific immunogen.
<b>Dilution</b>	WB: 1/500 - 1/2000. IHC: 1/100 - 1/300. ELISA: 1/20000.. IF 1:50-200
<b>Concentration</b>	1 mg/ml
<b>Purity</b>	≥90%
<b>Storage Stability</b>	-20°C/1 year
<b>Synonyms</b>	SENP2; KIAA1331; Sentrin-specific protease 2; Axam2; SMT3-specific isopeptidase 2; Smt3ip2; Sentrin/SUMO-specific protease SENP2
<b>Observed Band</b>	68kD
<b>Cell Pathway</b>	Nucleus, nuclear pore complex . Nucleus membrane ; Peripheral membrane protein ; Nucleoplasmic side . Cytoplasm . Shuttles between cytoplasm and nucleus. .
<b>Tissue Specificity</b>	Brain,Fetal brain,Melanoma,Teratocarcinoma,
<b>Function</b>	domain:The N-terminus is necessary and sufficient for nuclear envelope targeting.,function:Protease that catalyzes two essential functions in the SUMO pathway: processing of full-length SUMO1, SUMO2 and SUMO3 to their mature forms and deconjugation of SUMO1, SUMO2 and SUMO3 from targeted proteins. May down-regulate CTNNB1 levels and thereby modulate the Wnt pathway.,PTM:Polyubiquitinated; which leads to proteasomal degradation.,similarity:Belongs to the peptidase C48 family.,subcellular location:Shuttles between cytoplasm and nucleus.,subunit:Binds to SUMO2 and SUMO3 (By similarity). Interacts with the C-terminal domain of NUP153 via its N-terminus.,
<b>Background</b>	SUMO1 (UBL1; MIM 601912) is a small ubiquitin-like protein that can be covalently conjugated to other proteins. SENP2 is one of a group of enzymes that



process newly synthesized SUMO1 into the conjugatable form and catalyze the deconjugation of SUMO1-containing species.[supplied by OMIM, Apr 2004],

**matters needing attention**

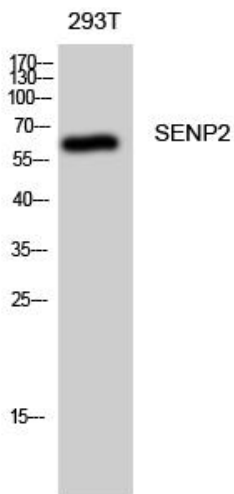
Avoid repeated freezing and thawing!

**Usage suggestions**

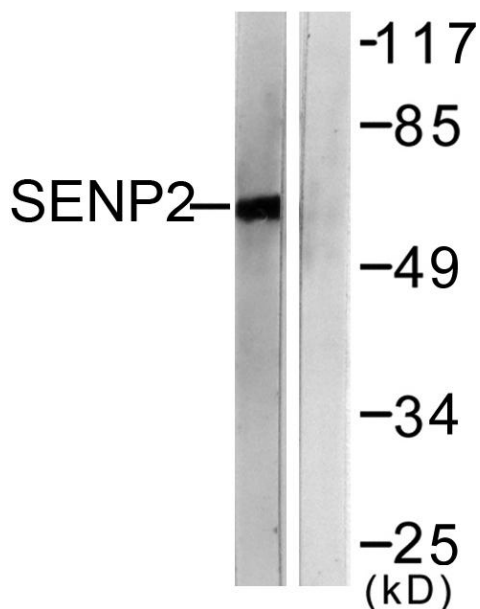
This product can be used in immunological reaction related experiments. For more information, please consult technical personnel.



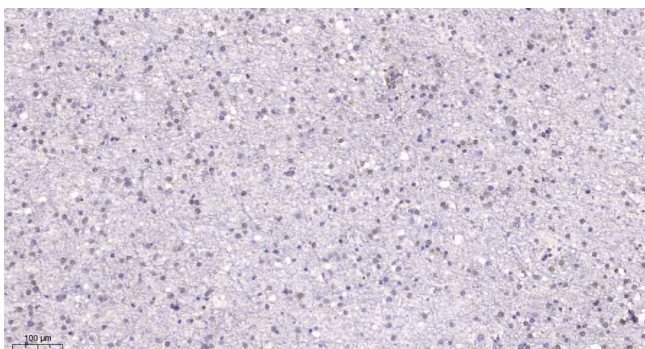
## Products Images



Western Blot analysis of 293T cells using SENP2 Polyclonal Antibody diluted at 1:1000



Western blot analysis of lysates from MDA-MB-435 cells, using SENP2 Antibody. The lane on the right is blocked with the synthesized peptide.



Immunohistochemical analysis of paraffin-embedded human brain. 1, Tris-EDTA,pH9.0 was used for antigen retrieval. 2 Antibody was diluted at 1:200(4° overnight).3,Secondary antibody was diluted at 1:200(room temperature, 45min).